

OR1D2 Antibody (C-term)
Affinity Purified Rabbit Polyclonal Antibody (Pab)
Catalog # AP16747b**Specification**

OR1D2 Antibody (C-term) - Product Information

| | |
|-------------------|-----------------------------|
| Application | WB,E |
| Primary Accession | P34982 |
| Other Accession | NP_002539.2 |
| Reactivity | Human |
| Host | Rabbit |
| Clonality | Polyclonal |
| Isotype | Rabbit IgG |
| Calculated MW | 35240 |
| Antigen Region | 286-312 |

OR1D2 Antibody (C-term) - Additional Information**Gene ID** 4991**Other Names**

Olfactory receptor 1D2, Olfactory receptor 17-4, OR17-4, Olfactory receptor OR17-6, Olfactory receptor-like protein HGMP07E, OR1D2, OLFR1

Target/Specificity

This OR1D2 antibody is generated from rabbits immunized with a KLH conjugated synthetic peptide between 286-312 amino acids from the C-terminal region of human OR1D2.

Dilution

WB~~1:1000

E~~Use at an assay dependent concentration.

Format

Purified polyclonal antibody supplied in PBS with 0.09% (W/V) sodium azide. This antibody is purified through a protein A column, followed by peptide affinity purification.

Storage

Maintain refrigerated at 2-8°C for up to 2 weeks. For long term storage store at -20°C in small aliquots to prevent freeze-thaw cycles.

Precautions

OR1D2 Antibody (C-term) is for research use only and not for use in diagnostic or therapeutic procedures.

OR1D2 Antibody (C-term) - Protein Information**Name** OR1D2

Synonyms OLFR1

Function Odorant receptor which may be involved in sperm chemotaxis. Bourgeonal is a strong chemoattractant for sperm in vitro and is shown to be a strong agonist for OR1D2 in vitro. May also function in olfactory reception.

Cellular Location

Cell membrane; Multi-pass membrane protein. Note=In spermatazoa is localized in the midpiece and is translocated to the head region upon receptor stimulation with bourgeonal

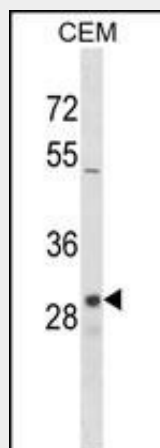
Tissue Location

Expressed in testis. Expressed in spermatozoa (at protein level). Expressed in olfactory epithelium

OR1D2 Antibody (C-term) - Protocols

Provided below are standard protocols that you may find useful for product applications.

- [Western Blot](#)
- [Blocking Peptides](#)
- [Dot Blot](#)
- [Immunohistochemistry](#)
- [Immunofluorescence](#)
- [Immunoprecipitation](#)
- [Flow Cytometry](#)
- [Cell Culture](#)

OR1D2 Antibody (C-term) - Images

OR1D2 Antibody (C-term) (Cat. #AP16747b) western blot analysis in CEM cell line lysates (35ug/lane). This demonstrates the OR1D2 antibody detected the OR1D2 protein (arrow).

OR1D2 Antibody (C-term) - Background

Olfactory receptors interact with odorant molecules in the nose, to initiate a neuronal response that triggers the perception of a smell. The olfactory receptor proteins are members of a large family of G-protein-coupled receptors (GPCR) arising from single coding-exon genes. Olfactory receptors share a 7-transmembrane domain structure with many neurotransmitter and hormone receptors and are responsible for the recognition and G protein-mediated

transduction of odorant signals. The olfactory receptor gene family is the largest in the genome. The nomenclature assigned to the olfactory receptor genes and proteins for this organism is independent of other organisms.

OR1D2 Antibody (C-term) - References

Neuhaus, E.M., et al. J. Cell. Sci. 119 (PT 15), 3047-3056 (2006) :
Malnic, B., et al. Proc. Natl. Acad. Sci. U.S.A. 101(8):2584-2589(2004)
Spehr, M., et al. Science 299(5615):2054-2058(2003)
Fuchs, T., et al. Genomics 80(3):295-302(2002)
Glusman, G., et al. Genomics 63(2):227-245(2000)